

Growing in GREEN

Growing in Green – Kuhn North America, Inc.

On the eastern edge of Green County you'll find Brodhead, Wisconsin; a community rich with a skilled and dependable workforce. Brodhead is also home to one of the county's fastest growing manufacturers - the North American Headquarters of Kuhn North America, Inc. From its inception in the early 1800's, the French based company has been an industry leader; breaking into new markets and improving farming practices by introducing new technologies in hay tools and other ag. products.

Entering the US market in 1960, the company's success led them to the decision to search for a manufacturing company that could expand their presence in the US. In 2002, capitalizing on the success of Knight Manufacturing Company, a Brodhead company owned by local dairy farmer, Stan Knight, Kuhn purchased the established business, forming Kuhn Knight. A marriage of leading manufacturer of spreaders and mixers, to the leading European manufacturer of hay tools, quickly positioned the new company to become the global leader in farm implements. Hitting the ground running, new products were introduced, and a more diverse line increased sales significantly. So much so that four major plant expansions have taken place since 2004, more than tripling the available manufacturing space. In 2008, the

Kuhn Group's two companies in the US, Kuhn Farm Machinery and Kuhn Knight, merged to form Kuhn North America, Inc.

"Kuhn North America relies on the contributions of its employees to remain competitive and to continue our growth. The skilled and dedicated workforce in Green County is one key factor that has encouraged us to make significant investments in our Brodhead, Wisconsin facility, which has become the North American headquarters for our international company."

Thierry Krier
President - Kuhn North America



Proving that an urban location is not essential for success, Kuhn thrives in its rural location. More than 450 people in and around Green County are employed by Kuhn North America, Inc. Through its substantial growth and major expansions, as well as being one of the top employers in Green County, Kuhn North America, Inc. is an excellent example of a successful business reaping the rewards of operating in Green County.

For more information on Kuhn North America, Inc. please visit: Kuhn North America, Inc.

For information on growing your business in Green County, please visit: Green County Development Corporation.

Green County Opportunity: Labor Force

5 YEAR Employment Trends

	Labor Force	Employed	Unemployed	Rate
2011 Preliminary	19,572	18,180	1,392	7.1%
2010	19,700	18,081	1,619	8.2
2009	20,336	18,495	1,841	9.1
2008	20,326	19,375	951	4.7
2007	20,433	19,494	939	4.6

Current Regional Employment Summary

	Green County, WI	Rock County, WI	Dane County, WI	Lafayette County, WI	Stephenson County, IL	5 - County Region
December 2011						
Civilian Labor Force - Total:	20,347	77,742	297,541	9,369	23,964	428,963
Number Unemployed:	1,182	6,426	13,230	467	2,427	23,732
Percent:	5.8%	8.3%	4.4%	5.0%	10.1%	5.5%
2010 Annual Average						
Civilian Labor Force - Total:	19,700	80,327	299,149	9,319	24,641	433,136
Number Unemployed:	1,619	8,898	16,843	635	2,886	30,881
Percent:	8.2%	11.1%	5.6%	6.8%	11.7%	7.1%

Contact the Green County Development Corporation for current opportunities to grow your business in the Green County area. Call Anna Schramke (608.328.9452) or email anna.gcdc@tds.net for information or to set up a confidential appointment. The sooner you call the sooner your business will reap the rewards of Growing in Green.



www.greencountyedc.com

Financing for Growing Businesses

Through its participation in the Wisconsin Community Development Block Grant for Economic Development Program, Green County has capitalized a \$1.0 million Revolving Loan Fund (RLF). The County's RLF is designed to help businesses that locate, expand or retain jobs in Green County.

The Green County Revolving Loan Fund offers fixed rate, flexible terms, at below market rates. Past loans have been as small as \$3,500 or as large as \$250,000.

Eligible uses for RLF loans include:

- Operating capital
- Acquisition of land and buildings
- Landscape and property improvements
- Machinery and equipment.

Minimum Requirements for Green County RLF Loans:

- Private Fund Leveraging. Must leverage at least one dollar of private funds for every dollar of RLF funds requested.

- Job Creation. At least one permanent Full-time Equivalent (FTE) position must be created or retained for every \$20,000 of RLF funds requested. Preference is given to projects creating full time permanent jobs that include health insurance.
- Employment. At least 51% of the jobs created or retained must be made available to persons of low to moderate income (LMI) as defined by the Federal government.
- Equity. In general, at least 10% of the project should be funded by owner equity. (Under certain circumstances, this may be reduced or waived.)
- Feasibility. Applicant must demonstrate the project is viable & the ability to repay the loan.

For additional information or to discuss making an application for financing, please contact Anna Schramke at 608-328-9452 or anna.gcdc@tds.net.

Monticello, WI – The Heart of Green County

The Village of Monticello has a great deal to offer current and future businesses. The quaint community is located in the heart of Green County, with convenient access to Madison, Janesville and Rockford, Illinois; each less than seventy miles away.

Like the businesses currently thriving in Monticello, those looking to follow suit will benefit from its progressive business climate and the dedicated, educated local workforce. The Village actively works with companies to address issues affecting their profitability and success. To attract new

companies, the Village used Tax Increment Financing to develop the Monticello Business Park, located on the northeast side of Monticello.

Sugar River Cold Storage anchors the Monticello Business Park. Started in 1997, Sugar River Cold Storage has had several expansions. The company now provides over 450,000 cubic feet of storage and freezer warehousing in its



continued on page 3...

Monticello...

49,000 sq.ft. building - an important resource to area cheese and food producers in the Green County and the southern Wisconsin region.

The Monticello Business and Professional Association also works closely with both business owners and Village officials to enhance the quality of life and overall commercial atmosphere.

Located on two exceptional, acclaimed recreation trails, Monticello has much to offer its families and visitors. The Village's charming downtown is home to the regionally renowned restaurant, The Dining Room at 209 Main.

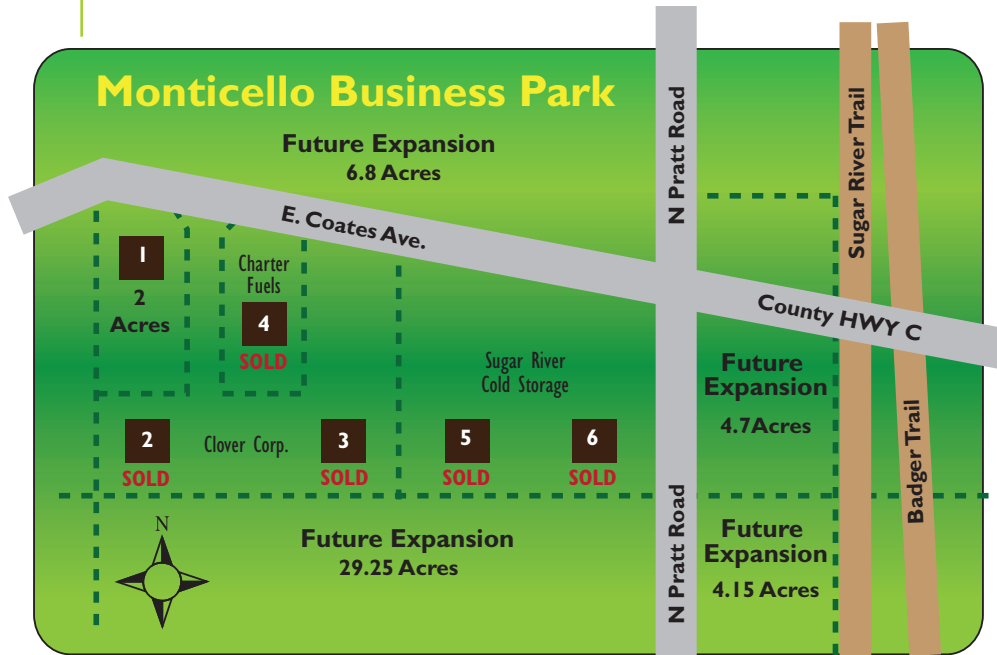
For information on Growing your business in Monticello, WI visit: www.GreenCountyEDC.com or contact:

Ryan Wiesen, Clerk
Village of Monticello
(608) 938-4383

www.monticello-wi.com

Monticello Snapshot

- **Population: 1,235**
- **Regional Population: 52,822 (15 mile radius)**
- **Bachelor's Degree or Higher: 22.42%**
- **Household Median Income: \$49,456**
- **Job Growth Rate: 0.75%**
- **Commute Travel Time: 20 min.**
- **Total Business within Commute: 1,301**
- **Monticello Business Park: Village owned, 2 acre site available**



Up-Coming Events!

March 5-7 • World Championship Cheese Contest • Madison, WI
www.worldchampioncheese.org

March 7-8 • Fusion 2012 CEO-CIO Symposium: Unlocking the business value of innovative strategies to get closer to your customers, employees, suppliers and constituents

March 21 • IEDC Webinar - Economic Development in a Digital World: Home-Based Businesses & Virtual Workers • www.iedonline.org

March 23-24 • Stateline Business & Career Expo • Monroe Chamber of Commerce • www.monroechamber.org

March 29 • ICSC Wisconsin Idea Exchange • Milwaukee, WI

April 11-13 • International Cheese Technology Expo • Milwaukee, WI
www.cheeseexpo.org

April 19-20 • 2012 Ideas to Profits Conference & Trade Show
Green Bay, WI
<http://www.ideas2profits.org/>

May 4 • Green County CEO Breakfast
Monroe Clinic

June 10-12 • Driving Innovation and Prosperity: Transforming Industries and Communities for the next Economy
St. Louis, MO • www.ideconline.org

Sept. 10-13 • WI Basic Economic Development Course • Madison, WI
www.WEDA.org



www.greencountyedc.com

Anna Schramke, CECD Executive Director
Green County Development Corporation
Green County Courthouse - 2nd Floor
1016 16th Avenue • Monroe, WI 53566
P: 608-328-9452 • gcdd@tds.net